

Courage



Resilience



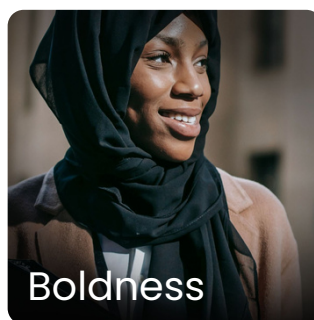
Vision



Integrity



Empathy



Boldness



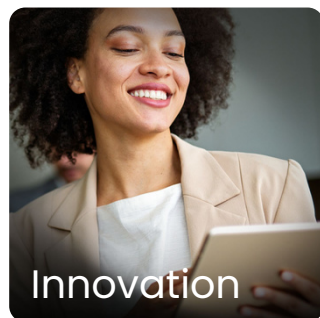
Collaboration



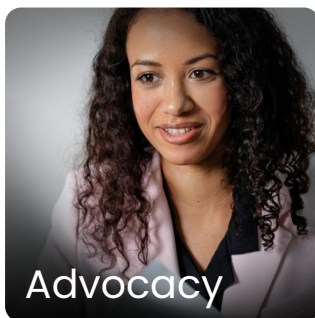
Authenticity



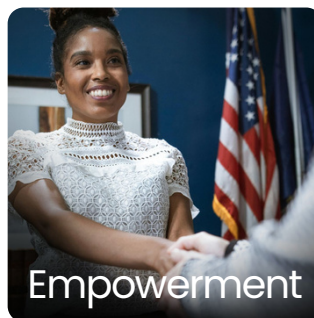
Tenacity



Innovation



Advocacy



Empowerment

BECOMING UNBOUGHT AND UNBOSSSED:

# 12 Transformative Traits to Change the World

Shirley Chisholm's legacy is a blueprint for Black women who dare to lead, fight, and dream. At Center 1968, our programs are built to nurture 12 transformative characteristics that mirror Shirley's indomitable spirit: fearlessness, perseverance, clarity, justice, compassion, audacity, unity, self-awareness, determination, creativity, activism, and empowerment. These traits are more than just ideals—they are the tools we equip our participants with to break barriers, challenge the status quo, and create a future where Black women thrive - and the world benefits. Through our programming, we don't just celebrate Shirley's legacy—we multiply it, one world-changing woman at a time.

